

The Measure

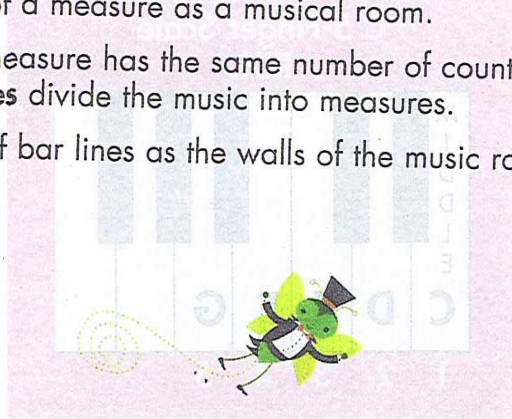
Grouping Beats

In music, the notes are grouped into **measures**.
Think of a measure as a musical room.

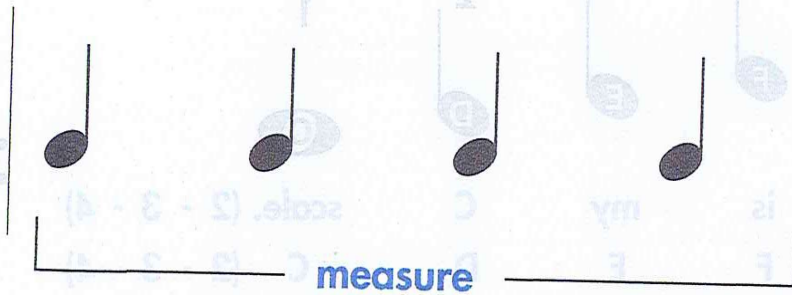
Each measure has the same number of counts (beats).

Bar lines divide the music into measures.

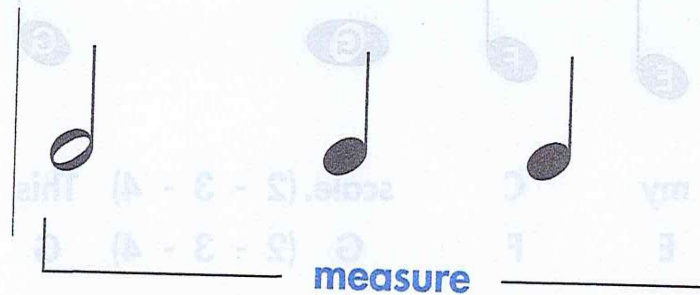
Think of bar lines as the walls of the music room.



bar line



bar line



Review:
Double Bar Line
means the end.

one **thin** line
one **thick** line

Tips from Carlos :

1. Can you circle each **bar line** above?
2. How many beats are in each measure above?
Circle a number in this blue box.
3. Turn to *Monsieur Mouse* on p. 48. Can you draw bar lines after every **4 beats**?

